

INVESTING IN OUR FUTURE: ADDRESSING NEW YORK CITY'S CHILD CARE CRISIS

SEPTEMBER 2021

Our summer 2021 poll makes clear that the pandemic-related challenges parents, families, and children face continue to mount as the pandemic continues, heightening the level of economic instability families are experiencing. The poll also found that Manhattan residents resoundingly support increased investment in early childhood programs at the city, state, and federal levels.

FOLLOWING ARE FOUR KEY FINDINGS that highlight the critical need for NYC's next mayor to act quickly to support families of infants and toddlers, putting families on the path to economic stability and our youngest residents on the path to a bright future.

KEY FINDINGS

- 1** Many parents report child care is often a burden and that finding affordable, high-quality child care is difficult in NYC. An overwhelming majority of residents indicated that the next mayor — and other elected local and state officials — should make child care a priority.
- 2** Child care has also created a number of economic difficulties for parents, including work-related consequences and difficulty paying for basic expenses.
- 3** Residents support a number of critical solutions to keep infants and toddlers healthy and developmentally on-track including access to high-quality child care, investing in early childhood programs, and improving resources that would be helpful to parents.
- 4** Parents are largely satisfied with their family-based or center-based child care centers. Residents broadly support further investments in these programs.

FINDING 1:

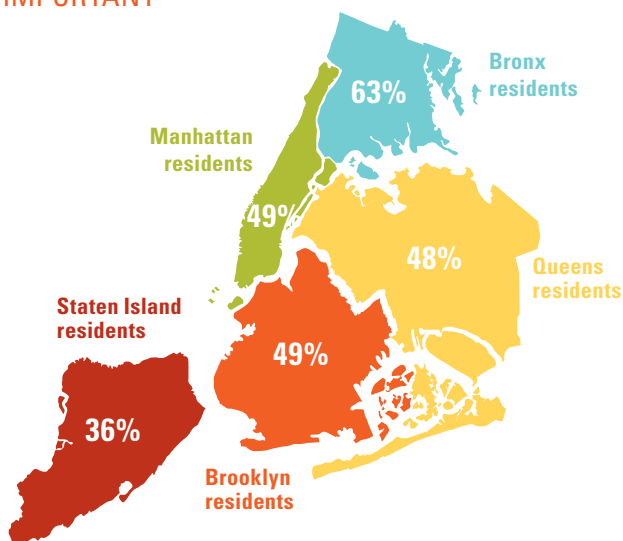
Many parents report child care is often a burden and that finding affordable, high-quality child care is difficult in NYC. An overwhelming majority of residents indicated that the next mayor — and other elected local and state officials — should make child care a priority.

More than **9** out of **10** residents in Manhattan said that child care is a burden for families in NYC. Of those who indicated child care is a burden, **9** out of **10** said it is hard to find affordable, high-quality child care that families are completely satisfied with.

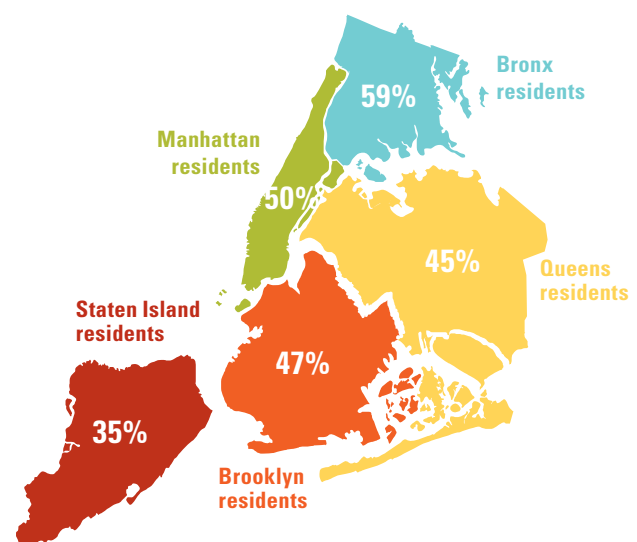
Nearly 9 in 10 (85%) residents in Manhattan ranked free or low-cost child care as a priority for the next mayor of NYC to focus on.

Nearly 9 in 10 (85%) parents in Manhattan ranked free or low-cost early education such as preschool and pre-kindergarten as a priority for the next mayor of NYC.

RANKED FREE OR LOW-COST CHILD CARE AS VERY IMPORTANT



RANKED FREE OR LOW-COST EARLY EDUCATION AS VERY IMPORTANT



Manhattan residents expressed strong support for investing additional resources into early childhood programs for infants and toddlers.

93% 

Approve of local and state government officials doing more to make sure that infants and toddlers in NYC are healthy and developmentally on track at birth and throughout early childhood.

86% 

Support NYC investing more public funds in expanding access to affordable, high-quality child care for families with infants and toddlers.

88% 

Support NYC using federal funding from the American Rescue Plan Act to support child care programming, including providing child care subsidies to families and grants to child care providers that currently have low numbers of children due to the pandemic and may be forced to permanently close.

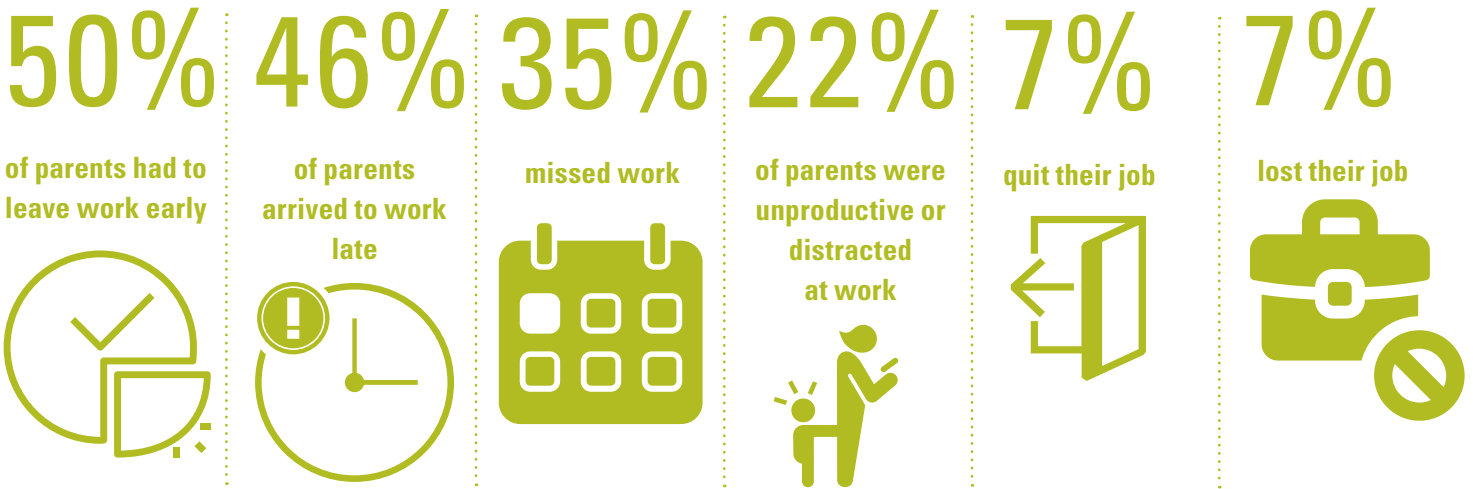


It is critical that the next mayor act with the greatest urgency to create an early childhood system that works for all families. Our city's future depends on it.

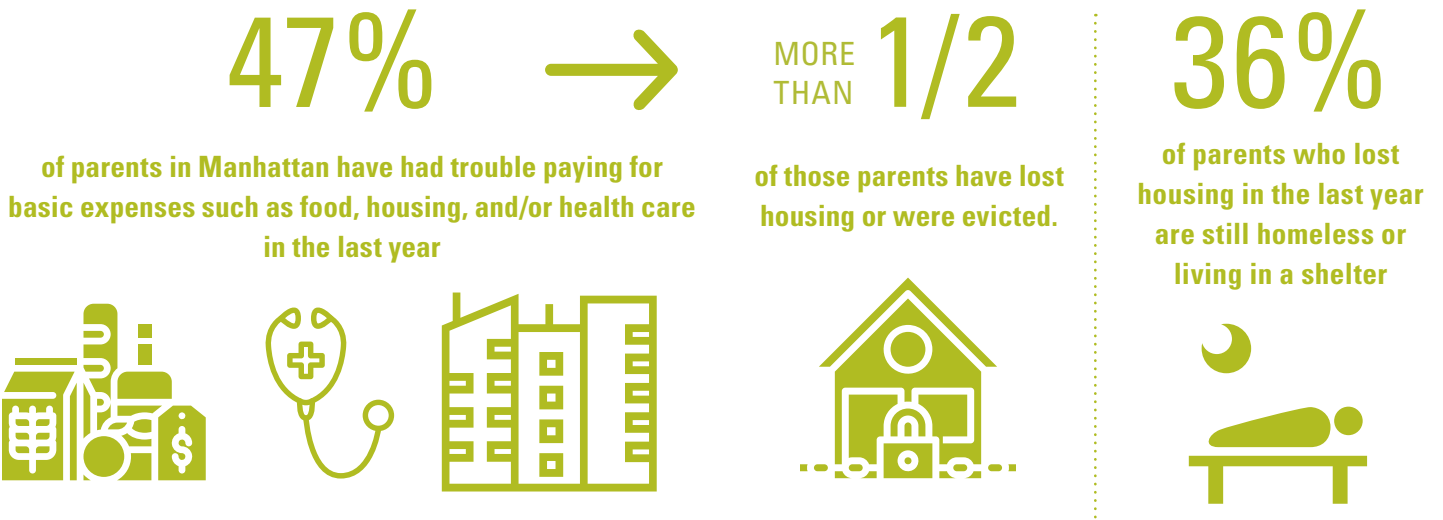
FINDING 2:

Child care has also created a number of economic difficulties for parents, including work-related consequences and difficulty paying for basic expenses.

Parents in Manhattan reported that child care issues had work related consequences.



Nearly half of parents in Manhattan had to leave work early or arrive to work late due to child care issues.



FINDING 3:

Residents support a number of critical solutions to keep infants and toddlers healthy and developmentally on-track including access to high-quality child care, investing in early childhood programs, and improving resources that would be helpful to parents.

Parents indicated that NYC should be investing more in the following services that would be helpful to them:

| | The Bronx | Brooklyn | Manhattan | Queens | Staten Island |
|--|-----------|----------|-----------|--------|---------------|
| Programs and services for infants and toddlers with developmental delays and disabilities | 85% | 76% | 81% | 69% | 76% |
| Affordable, high-quality child care for toddlers | 82% | 73% | 80% | 67% | 62% |
| Affordable, high-quality infant care for newborns | 80% | 71% | 77% | 64% | 72% |
| Free preschool programs for 3-year-olds | 77% | 71% | 73% | 63% | 58% |
| Free prekindergarten for 4-year-olds | 78% | 69% | 76% | 63% | 62% |
| Affordable prenatal and neonatal care | 80% | 70% | 78% | 64% | 72% |
| Early childhood programs that are culturally responsive to the communities they serve | 79% | 70% | 73% | 64% | 56% |
| Child care and early learning programs for children | 80% | 67% | 72% | 62% | 60% |
| Home visits for families with newborns from specialists trained in early childhood development | 74% | 66% | 73% | 58% | 57% |

FINDING 4:

Parents are largely satisfied with their family-based or center-based child care centers. Residents broadly support further investments in these programs.

85% 

OF PARENTS DESCRIBED THEIR **CENTER-BASED** CHILD CARE PROGRAM QUALITY AS POSITIVE

83% 

OF PARENTS DESCRIBED THEIR **FAMILY-BASED** CHILD CARE PROGRAM QUALITY AS POSITIVE

Residents overwhelmingly support local officials taking steps to help ease the financial burdens that child care providers at center- or home-based care programs face.

| | The Bronx | Brooklyn | Manhattan | Queens | Staten Island |
|---|-----------|----------|-----------|--------|---------------|
| Financial assistance for pandemic-related protective gear and cleaning supplies | 92% | 90% | 92% | 88% | 85% |
| Increased financial assistance to low-income parents to cover tuition and other fees paid for by the child's parents | 92% | 87% | 90% | 85% | 76% |
| Financial assistance for providers to cover wages and employee benefits | 93% | 88% | 89% | 80% | 78% |
| Financial assistance for providers to cover the costs of repairs and additions like creating a fenced-in yard, adding a sink or bathroom, or building updates due to fire or building codes | 93% | 88% | 90% | 82% | 75% |
| Subsidies or other financial help from government agencies to providers | 91% | 86% | 88% | 83% | 79% |